

Sample Build Book

This is a sample build book for some real costumes made by some of the METROCON Cosplay Staff. Most of the items in it are for Beerus and Champa from Dragon Ball Super, but in order to show a wider range of techniques, some photos are from other builds. These costumes are not necessarily competition costumes, so their quality is not indicative of a Master or any other level entry. It is intended only as an example of how to lay out your information, and to clarify what we mean in our rules. Please feel free to deviate from how we have organized it.

Build Book Requirements:

- 15 pages or less (not counting the cover page)
- Must include several images of the costume creator(s) participating in the build. This can include mirror selfies of fitting items on yourself, photos of the pattern mock up on your model, test fitting unpainted foam armor, etc. And/or photos showing the creator painting, pouring resin, sewing appliques, gluing, etc.
- Research images should include screenshots from the canon media showing front, back and side if possible. These can also include images of figures or official art books, as well as inspiration pictures from outside the media such as sketches, haute couture garments, historical armor, fanart, wig styling inspiration, etc.
- All images must be PG, please do not use images with gore or nudity.
- Images should be clear and well lit.
- Build book can be in portrait or landscape orientation, and can be created in the photo and text editing program of your choice. For example, Google Docs, Google Slides, Powerpoint, Canva, Adobe InDesign, Photoshop, etc.
- Build book file **must be submitted as a PDF to cosplay@metroconventions.com by 11:59pm on Sunday June 30th, 2024**, costume should be 90-100% done for final photos, but you will be judged on what you present in person.
- Cover page must have the following information:
 - Cosplay Craftsmanship Competition and Runway Show/Metro Cosplay Championship
 - Build Book [current year]
 - Level (Novice, Journeyman, Master)
 - Character(s) Name and Series
 - Legal Name (as submitted in application), Stage Name
 - Reference Image of Character

Build Book Suggestions:

The purpose of the build book is to showcase the best and most interesting parts of the build, it does not have to be like a tutorial. Other than the (very important!) reference images, it should show off anything that will not be visible in the finished costume. This includes things like unpainted foam, hidden attachments, tools and programs used to create specific parts of the costume, materials before dyeing, sewing patterns, shoes before fur is glued on, in-process 3D models, etc. Remember, judging is only 3-5 minutes, so clear pictures with a small explanation is great!

Cosplay Craftsmanship Competition and Runway Show

Build Book 2024

Master Level

Beerus and Champa - Dragon Ball Super

Amanda McLastname and Roy McLastname - MetroconStaffCosplay



Research Images

Be sure to put front, back, and side if possible.



Above, our sketch of a redesign of Beerus, with more details and embroidery added.

Patterning and Mock Up Fittings

HOW TO MAKE HAREM PANTS

W/PRINTABLE PATTERN



We used the free harem pants pattern from HappiestCamper.com as the base, and altered it to have an elastic waistband and wider legs.

Below, we mocked up the tabards in paper to fit each character.



Sewing Details

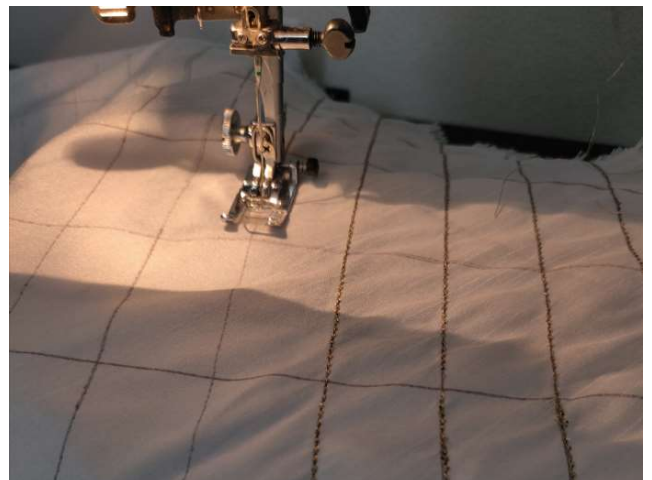


An 18th century corset before lining and covering in fabric. This isn't related to Beerus and Champa, but they don't have any cool tailoring to show off.

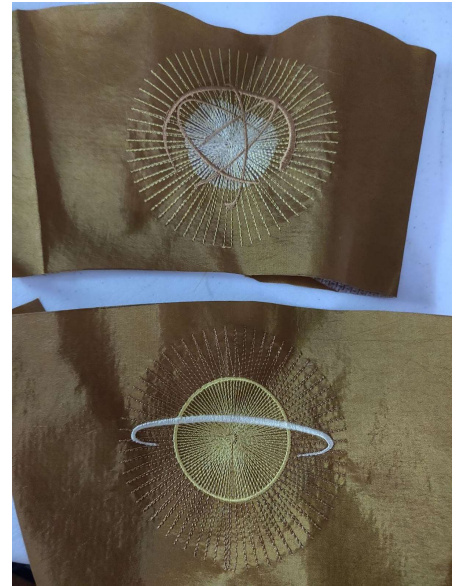
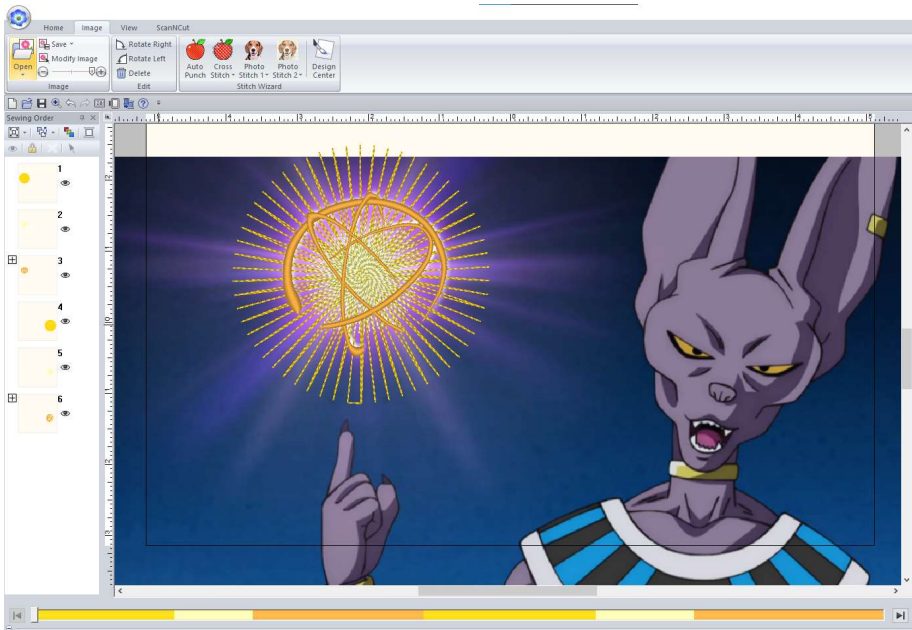


Necklaces are gold lamé lined and bound with taffeta, and held together using the stitch-in-the-ditch method. The rope trim is sewn by hand.

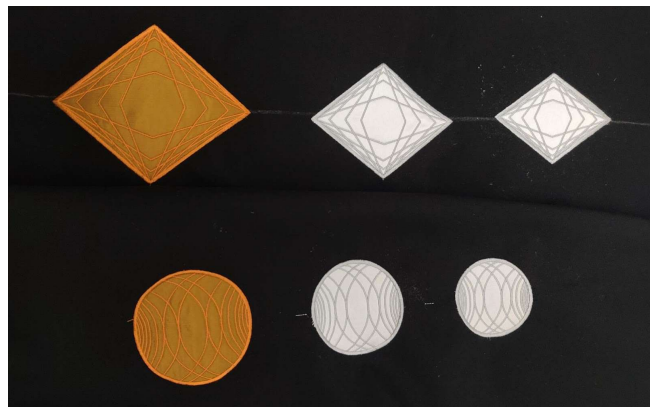
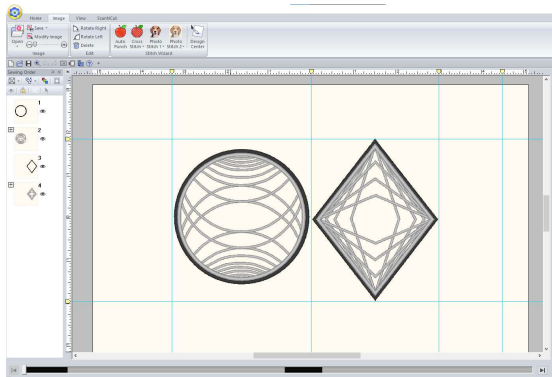
Right, the bias binding for the collars was sewn with diagonal metallic gold stripes to create radiating stripes on the finished binding.



Embroidery



Amanda used PE Design 10 to create the embroidery files for the bracers, collars, and tabards. The bracers were inspired by the energy ball attacks Beerus and Champa use in the show. The fabric was embroidered before the bracers were sewn together.

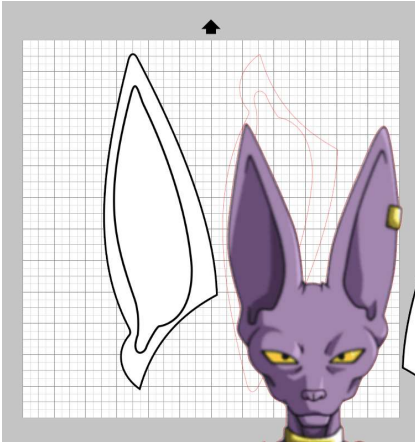


The tabard shapes were embroidered directly onto the fabric using the applique feature in PE Design 10.

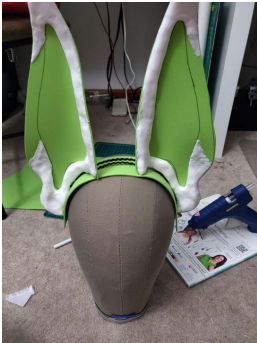
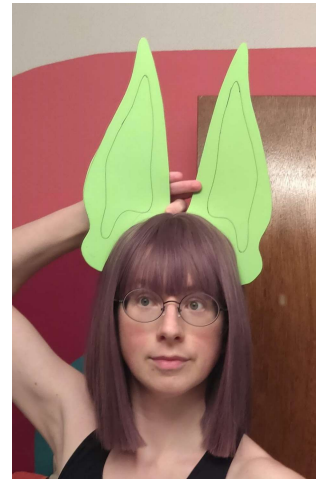


Collar embroidery was done as a series of patches, applied later with machine sewing. This enabled Amanda to cut the excess threads off the edges more cleanly.

Ears



Beerus and Champa's ears were traced digitally using Silhouette Studio. The ear shape was cut out in paper, and traced onto 3mm craft foam to check for scale and fit. We based the fit off the ratio of Beerus's face height to the ear length and edited the shape to our liking.



Ears were then curved with a heat gun, hot glued to a curved foam base, and two pieces of trim glued between to hold them a set distance apart. The ears were built up with Model Magic clay to give dimension and depth, and to stabilize the long shape.



Finally, the excess foam headband was cut away to leave only the base touching the ear, and the trim to hold them together invisibly in on the wig.

The ears were painted with a custom mixture of acrylic paint to the slightly different purple colors of their skin, with black lines added for the DragonBall animation style.

We glued badge magnets to the bottom of the ears, and secure them to our heads by putting a magnet inside our wigs.

Props



Left, the seals printed on cardstock, and aged with tea. (These are not from Beerus and Champa, these are from the Sisters of Battle from Warhammer 40K.)



Right, the process for painting the bolter gun (from the Sisters of Battle from Warhammer 40K). 3D print file made by Erdrick at cults3D.com and printed by us in PLA on a FDM printer, the Ender 3. The print was sanded and cracks filled with Bondo, then primed, painted with hammered silver Rustoleum spray paint. Finally, the gun was airbrushed with black paint and details added by hand. The seal was attached using super glue and sealing wax.

Wigs

Both wigs are from Amazon, and were purchased in their current colors to match the slightly different purple tones of both characters.



Above, Champa's wig was cut into a shaggy bob, and curled using mesh curlers and a steamer. Below, Beerus's wig was straightened to remove creasing from packaging, and cut using scissors and electric trimmers to be as blunt as possible.



Makeup Test



Makeup test for Sisters of Battle.

Scarring was drawn on with lip pencil, then 3 coats of Mehron rigid collodion and highlighted with a white liner pen.

Contacts are from Uniqso.

Completed Costumes and Props
(Costume should be 90-100% done for these pictures)

